



INDOFINE Chemical Company, Inc.

121 Stryker Lane, Bldg. 30, Suite 1 • Hillsborough, NJ 08844 • U.S.A.

Phone: (908) 359-6778 • FAX: (908) 359-1179

website: www.indofinechemical.com

e-mail: chemical@indofinechemical.com

CERTIFICATE OF ANALYSIS

Cat. No.: 22-362

Product: **5,7,2'-TRIMETHOXYFLAVONE**

Lot No.: 0405129

Molecular Formula: C₁₈H₁₆O₅

Molecular Weight: 312.33

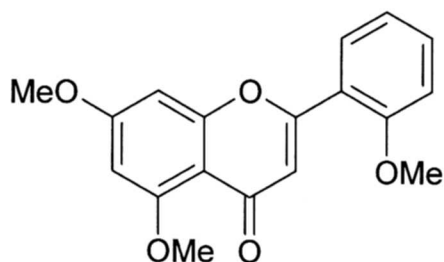
Melting Point: 178-179°C

Appearance: White powder

TLC: Chloroform:methanol (9:1)

Solubility: Soluble in chloroform

Purity (HPLC): 99.73%





INDOFINE Chemical Company, Inc.

121 Stryker Lane, Bldg. 30, Suite 1 • Hillsborough, NJ 08844 • U.S.A.

Phone: (908) 359-6778 • FAX: (908) 359-1179

website: www.indofinechemical.com

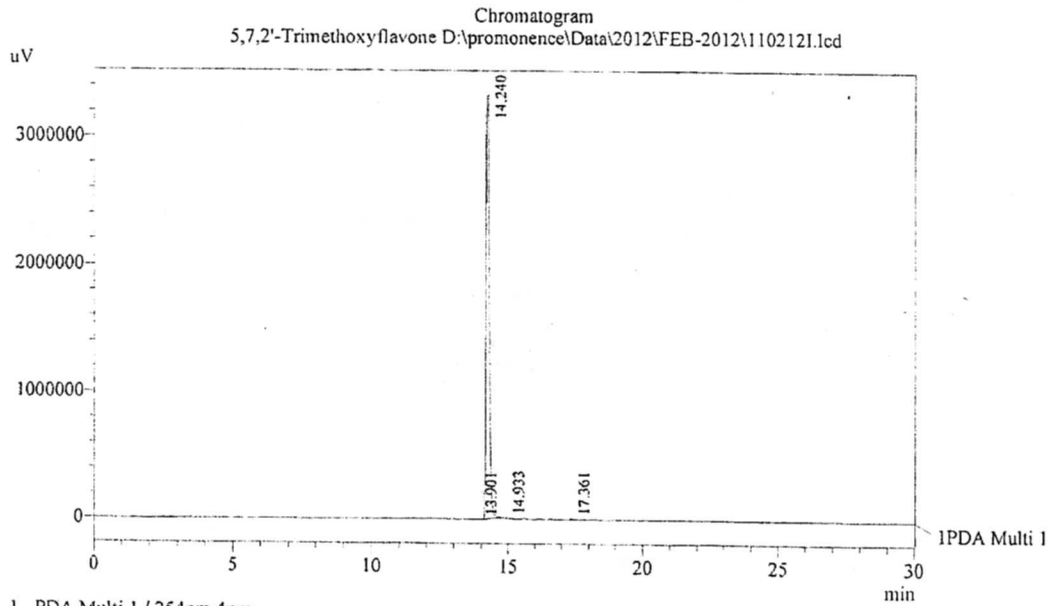
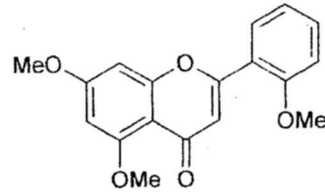
e-mail: chemical@indofinechemical.com

HPLC ANALYSIS

Acquired by : Sanjeev
Sample Name : 5,7,2'-Trimethoxyflavone
Sample ID : Lot No:-0405129
Injection Volume : 20 uL
Data Filename : 1102121.lcd
Method Filename : Linear Gradient.M.lcm

Catalog No.: 22-362
Product name: 5,7,2'-Trimethoxyflavone
Lot No.: 0405129

Date Acquired : 2/11/2012 5:26:44 PM
Data Processed : 2/11/2012 6:06:58 PM
Column : LUNA C-18(2), (250mm x4.6mm 5.0µ)
Flow : 1.000 mL/min.
Mobile Phase : A(0.05% TFA in water) B(Acetonitrile)
0.01 90 10
12.0 10 90
20.0 10 90
25.0 90 10
30.0 90 10



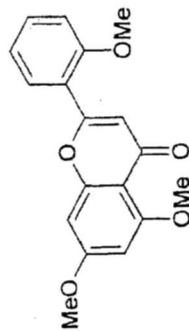
PeakTable

Peak#	Name	Ret. Time	Area	Area %	Relative Retention Time
1	RT:13.901	13.901	2291	0.01	0.98
2	RT:14.240	14.240	28992232	99.73	1.00
3	RT:14.933	14.933	6919	0.02	1.05
4	RT:17.361	17.361	68251	0.23	1.22
Total			29069694	100.00	



INDOFINE Chemical Company, Inc.
121 STRYKER LANE
BLDG. 30, SUITE 1
HILLSBOROUGH, NJ 08844

Catalog No.: 22-362
Product name: 5,7,2'-Trimethoxyflavone
Lot No.: 0405129

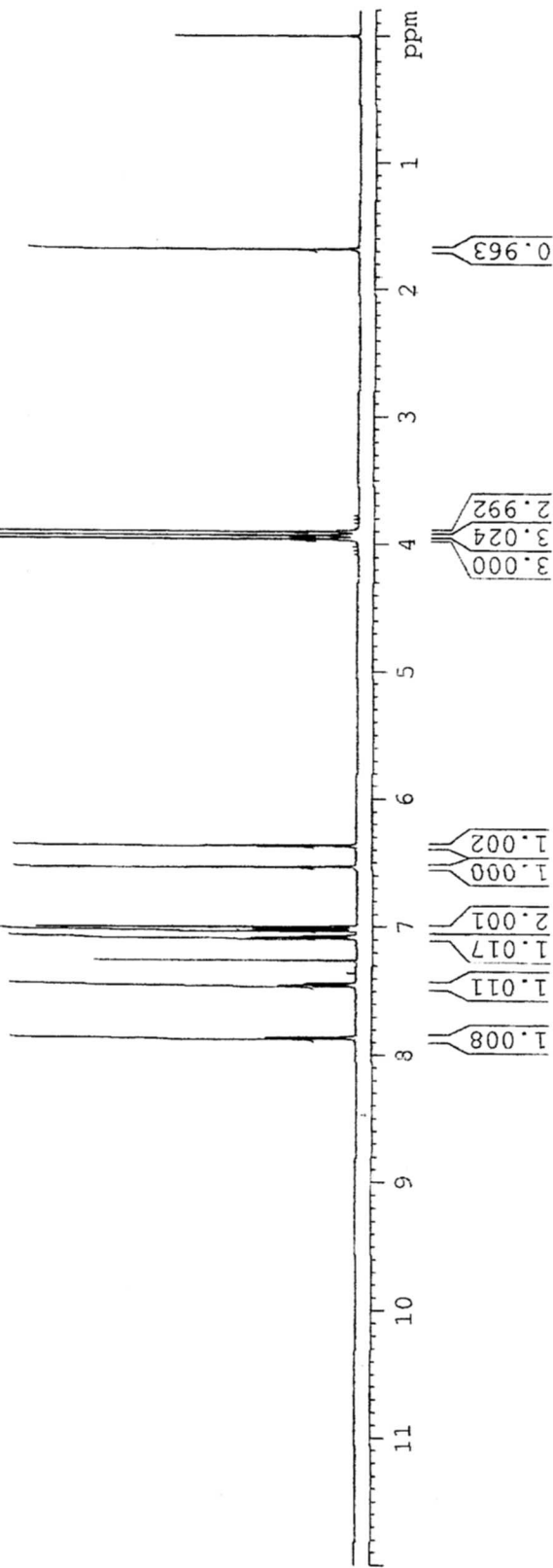


ICC-05
1H IN CDCL3
AVANCE-600
28-2-12

SOLVENT CDCL3
NS 16
DS 0
SMH 11029.412 HZ
FIDRES 0.382481 HZ
AQ 1.3076447 SEC
RG 1820
DW 45.333 USEC
DE 6.00 USEC
TE 298.2 K
D1 1.50000000 SEC
TD0 1

***** CHANNEL f1 *****
NUC1 1H
P1 8.30 USEC
PL1 -1.00 DB
PL1W 15.17893314 W
SFO1 600.3340821 MHZ

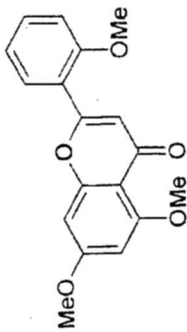
F2 - Processing parameters
SI 32768
SF 600.3300118 MHZ
WDW EM
SSB 0
LB 0.30 HZ
GB 0
PC 1.00





INDOFINE Chemical Company, Inc.
121 STRYKER LANE
BLDG. 30, SUITE 1
HILLSBOROUGH, NJ 08844

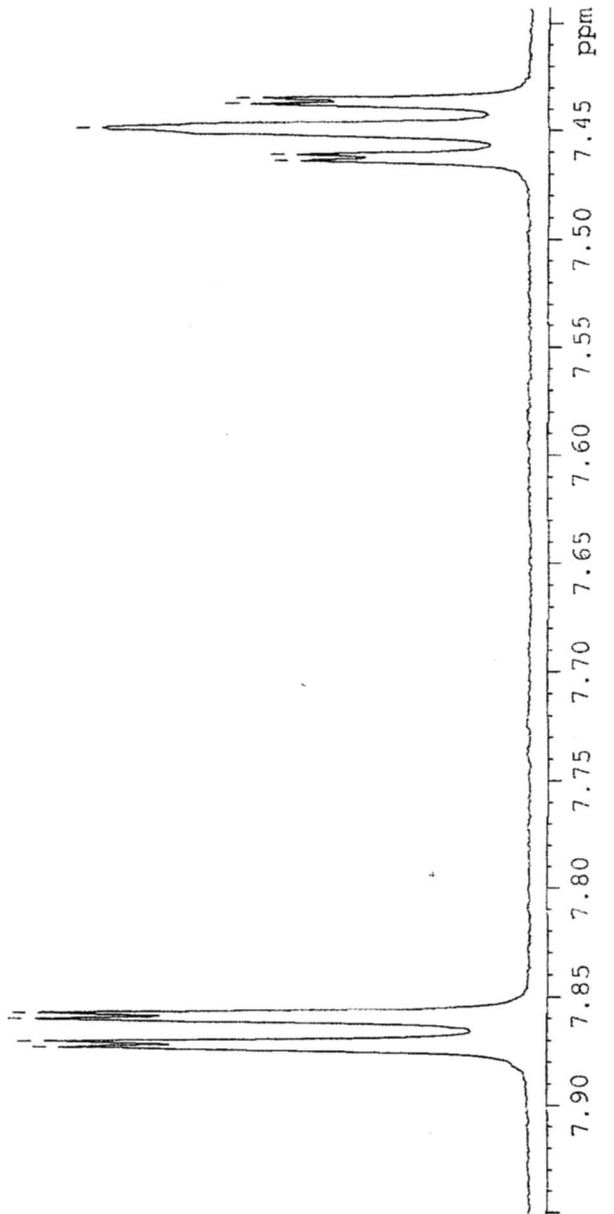
Catalog No.: 22-362
Product name: 5,7,2'-Trimethoxyflavone
Lot No.: 0405129



ICC-05
1H IN CDCL3
AVANCE-600
28-2-12

7.8874
7.8871
7.8951
7.8958

7.464
7.462
7.450
7.438
7.436



SOLVENT CDCL3
NS 16
DS 0
SRH 11029.412 Hz
FIDRES 0.362381 Hz
AQ 1.3076447 sec
RG 1820
DN 45.333 usec
DE 6.00 usec
TE 298.2 K
D1 1.50000000 sec
TPO 1

***** CHANNEL f1 *****
NUC1 1H
P1 9.30 usec
PL1 -1.00 dB
P1W 15.17893314 W
SFO1 600.3349821 MHz

FC - Processing parameters
SI 32768
SF 600.3300118 MHz
WDW EM
SSB 0
LB 0.30 Hz
GB 0
PC 1.00



INDOFINE Chemical Company, Inc.

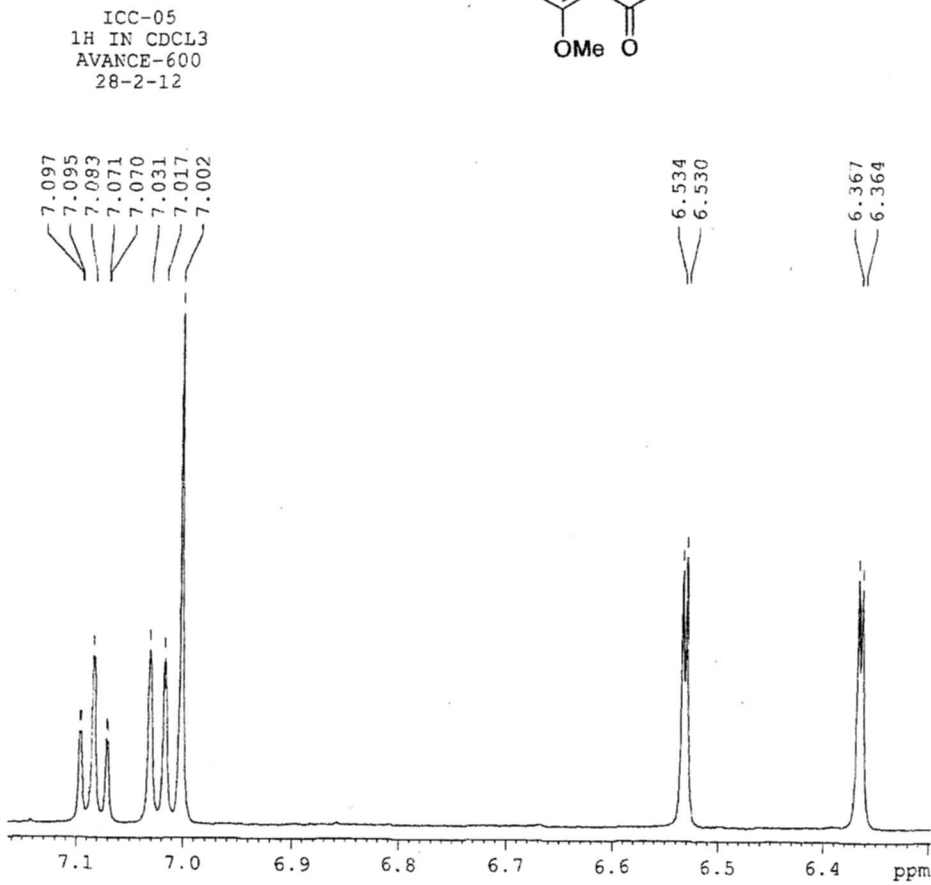
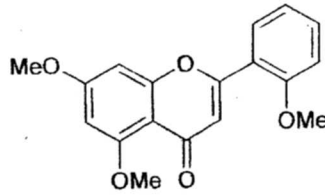
121 Stryker Lane, Bldg. 30, Suite 1 • Hillsborough, NJ 08844 • U.S.A.

Phone: (908) 359-6778 • FAX: (908) 359-1179

website: www.indofinechemical.com

e-mail: chemical@indofinechemical.com

Catalog No.: 22-362
Product name: 5,7,2'-Trimethoxyflavone
Lot No.: 0405129



SOLVENT CDCL3
NS 16
DS 0
SMH 11029.412 Hz
FIDRES 0.382381 Hz
AQ 1.3075447 sec
RG 1820
DM 45.333 usec
DE 6.00 usec
TE 298.2 K
DI 1.5000000 sec
TDO 1

***** CHANNEL f1 *****
NUC1 1H
P1 9.30 usec
PL1 -1.00 dB
PULP 15.17893314 W
SFO1 600.3340821 MHz

F2 - Processing parameters
SI 32768
SF 600.330118 MHz
WDW EM
SSB 0
LB 0.30 Hz
GB 0
PC 1.00

ICC INDOFINE Chemical Company, Inc.

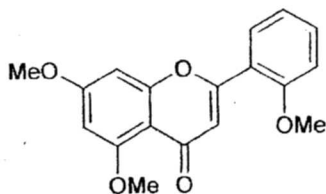
121 Stryker Lane, Bldg. 30, Suite 1 • Hillsborough, NJ 08844 • U.S.A.

Phone: (908) 359-6778 • FAX: (908) 359-1179

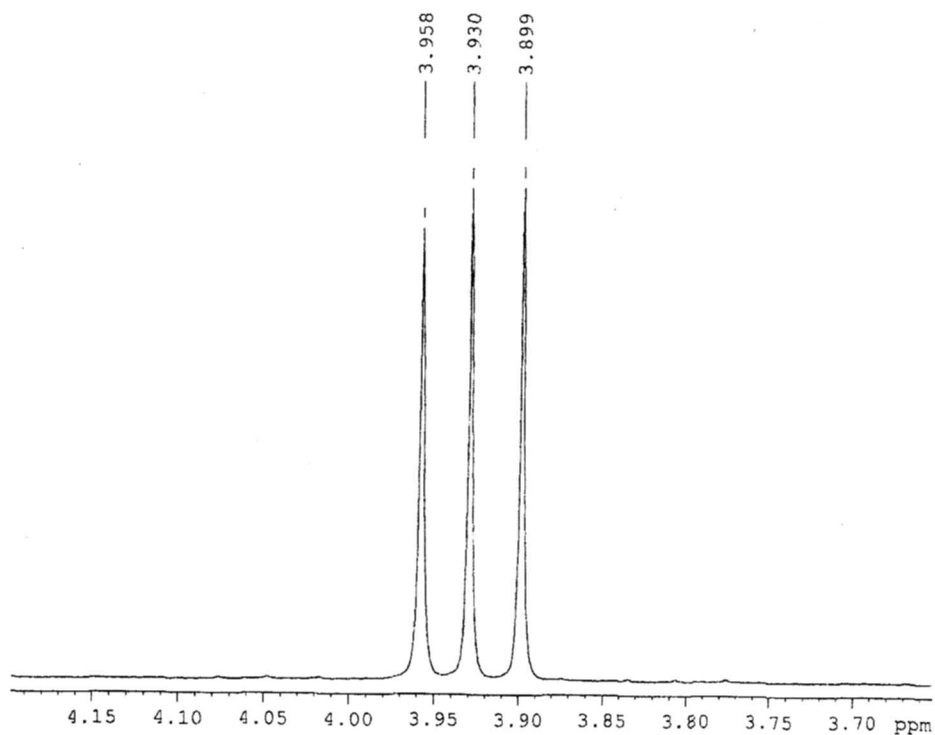
website: www.indofinechemical.com

e-mail: chemical@indofinechemical.com

Catalog No.: 22-362
Product name: 5,7,2'-Trimethoxyflavone
Lot No.: 0405129



ICC-05
1H IN CDCL3
AVANCE-600
28-2-12



```
SOLVENT      CDCl3
NS           16
DS           0
SMH         11029.412 Hz
FIDRES      0.382381 Hz
AQ          1.3076447 sec
RG          1820
DM          45.333 usec
DE          6.00 usec
TD          238.2 K
DI          1.5000000 sec
TDC         1
```

```
----- CHANNEL f1 -----
NUC1         1H
P1          8.30 usec
PC1         -1.00 dB
PL1W        15.1789314 W
SFO1        600.3347821 MHz
```

```
PR - Processing parameters
SI          32768
SF          600.3300118 MHz
WDW         EM
SSB         0
LB          0.30 Hz
GB          0
PC          1.00
```